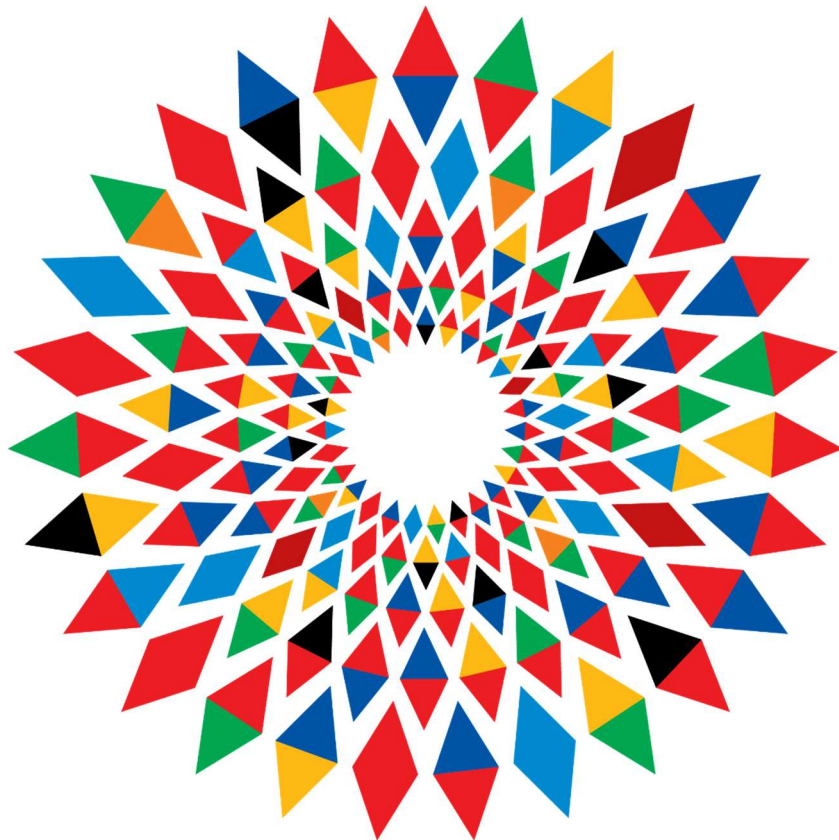


Practical Information Note

ESPON Monitoring Committee meeting

Prague, Czech Republic

5th and 6th December 2022



EU2022.CZ

Czech Presidency of the Council
of the European Union

General information

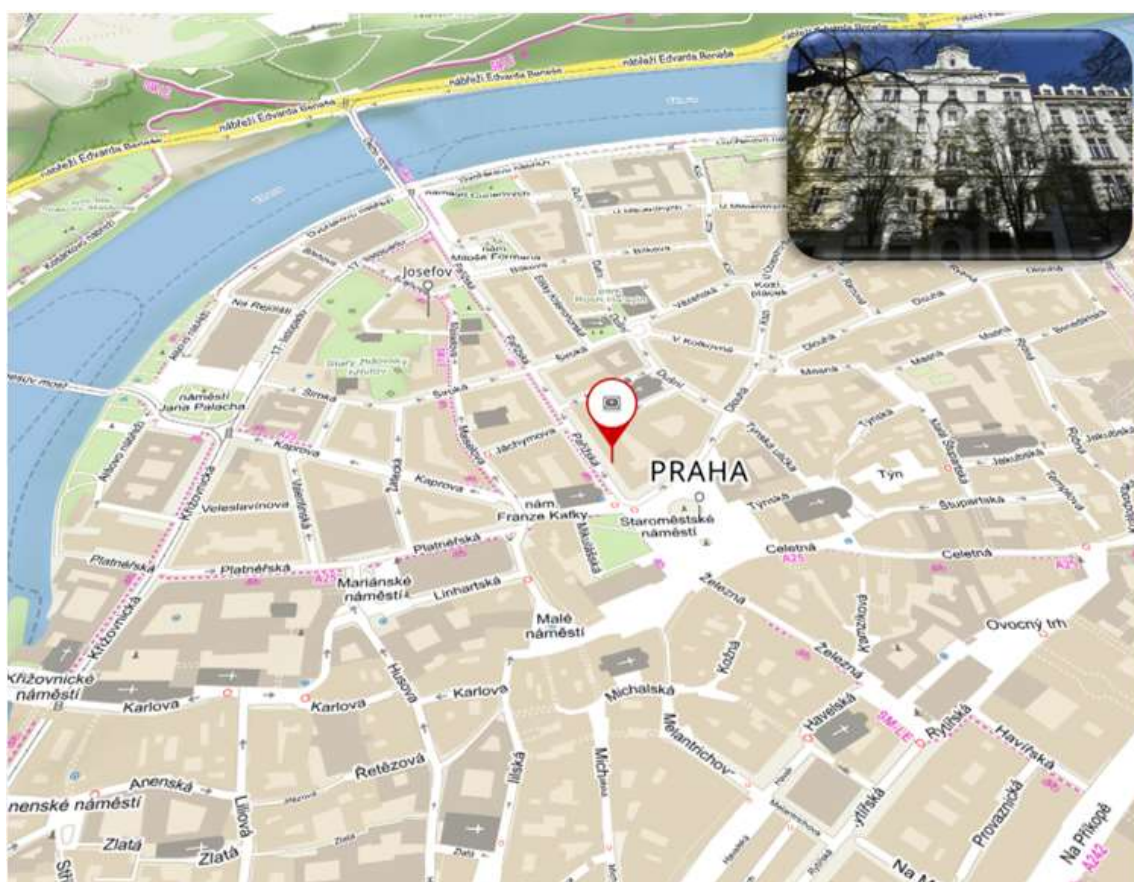
The Czech Republic will hold the Presidency of the Council of the European Union between 1 July and 31 December 2022. ESPON Managing Authority and the Czech Presidency is delighted to welcome you to Prague for the **Monitoring Committee meeting**.

For your visit, the Czech Presidency of the Council of the European Union has the pleasure to convey the following practical information. Please note that all information may be subject to change, in such a case it will be communicated by the Presidency in due time.

Venue

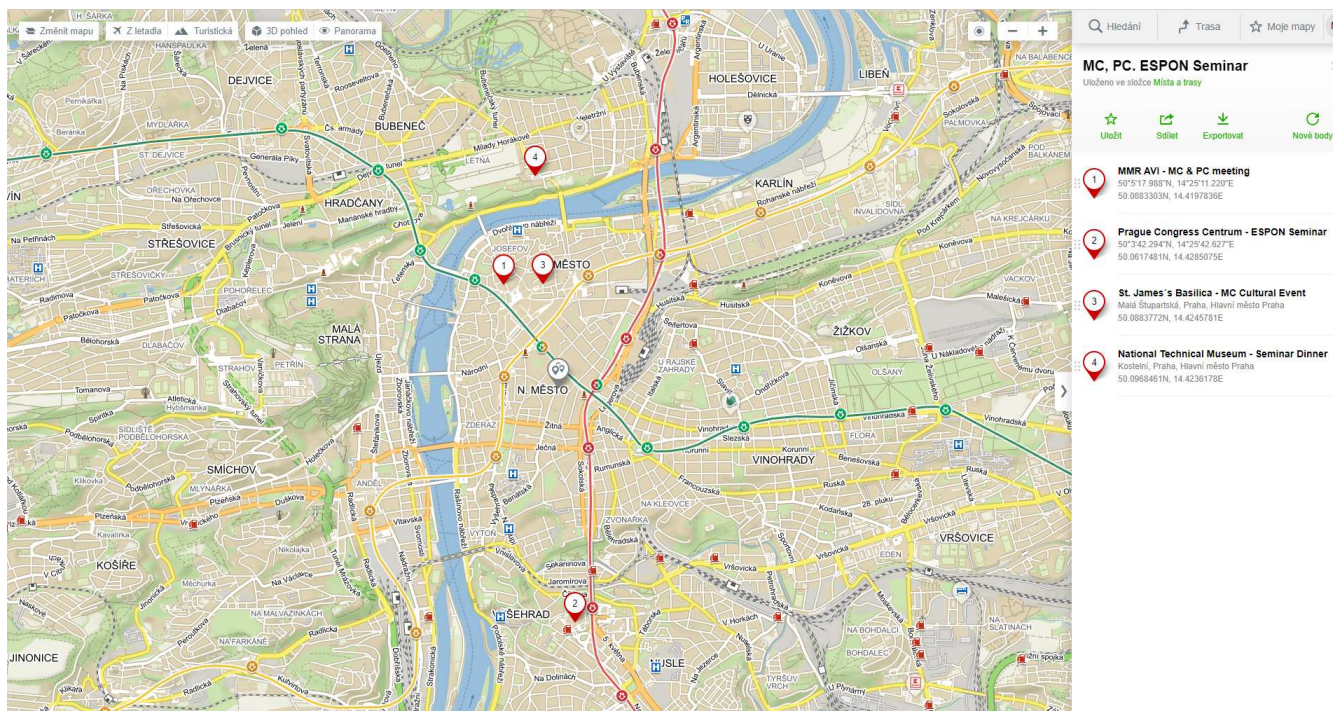
Prague – 5 and 6 December 2022

The meetings will be held at the **Ministry of Regional Development**, in meeting room **AVI – Akademie veřejného investování**, entrance from Pařížská 4, Praha 1





EU2022.CZ



Zoom in for detail or use this [link](#).

Registration

You will receive an invitation from accreditation system. If not, please let us know so we can send it to you.

We kindly ask you to register for MC meeting at your earliest convenience via the accreditation system, but no later than **15 November 2022**.

For those who will also participate at ESPON Seminar or ECP meeting please register to all meetings **separately**.

All participants will receive a **badge**, which will be issued to delegations by the organisers on arrival at the venue. All participants must wear their badges visibly at all times during the meetings.

If you lose your badge, please notify the organization team **immediately**.

All personal information provided during the accreditation will be processed only in accordance with General Data Protection Regulation (GDPR) obligations mentioned in the CZ PRES GDPR Memorandum, which can be found on the Presidency website and the accreditation system itself.

Only accredited delegates will be able to access the meeting venue.

Transportation

The Presidency will not provide any transportation to and from the airport for the meeting participants.

How to get to the venue from Vaclav Havel airport (PRG)

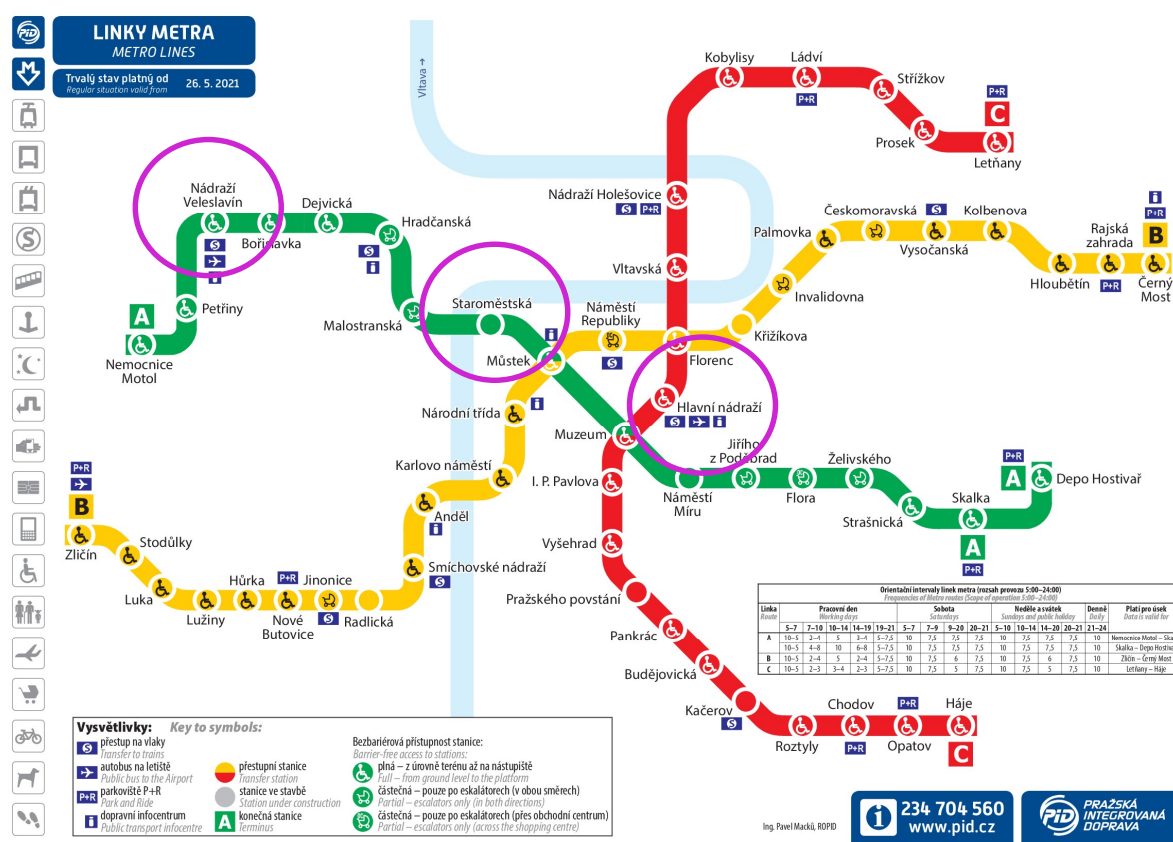
From the airport, take bus number 119 to the final stop “Nádraží Veleslavín”. At the stop “Nádraží Veleslavín” change to the green metro line A in direction “Depo Hostivař”.

The venue is situated near the metro stop “Staroměstská”.

How to get to the venue from Central Railway Station - Hlavní nádraží

From the Central Railway Station “Hlavní nádraží” take the red metro line C in direction “Háje”. At the stop “Muzeum” change to the green metro line A in direction “Nemocnice Motol”.

The venue is situated near the metro stop “Staroměstská”.



Public Transport Network

Prague's integrated public transport system (PID) is a very complex mass transit system.

The basic transfer ticket for an adult costs 40 CZK and is valid for 90 minutes. For shorter distances lasting no more than 30 minutes you need to pay 30 CZK for a ticket. A tourist ticket valid for 24 hours costs 120 CZK and a 3-day-ticket is for 330 CZK.

All information about Prague's transport services (including route planner) can be found on the [Prague Public Transport website](#).

Taxi Service Providers

You will find two main taxi service providers: FIX TAXI and Taxi Praha at the airport. Sales counters of taxi service providers are located in the Terminal 1 and 2 Arrival Halls. More information you will find on the following link: <https://www.prg.aero/en/taxi>

Taxi fares are approximately 40-50 CZK per km (plus starting rate about 60 CZK). The distance from the airport to the venue is about 16 km and transport time is estimated to 30-40 minutes.

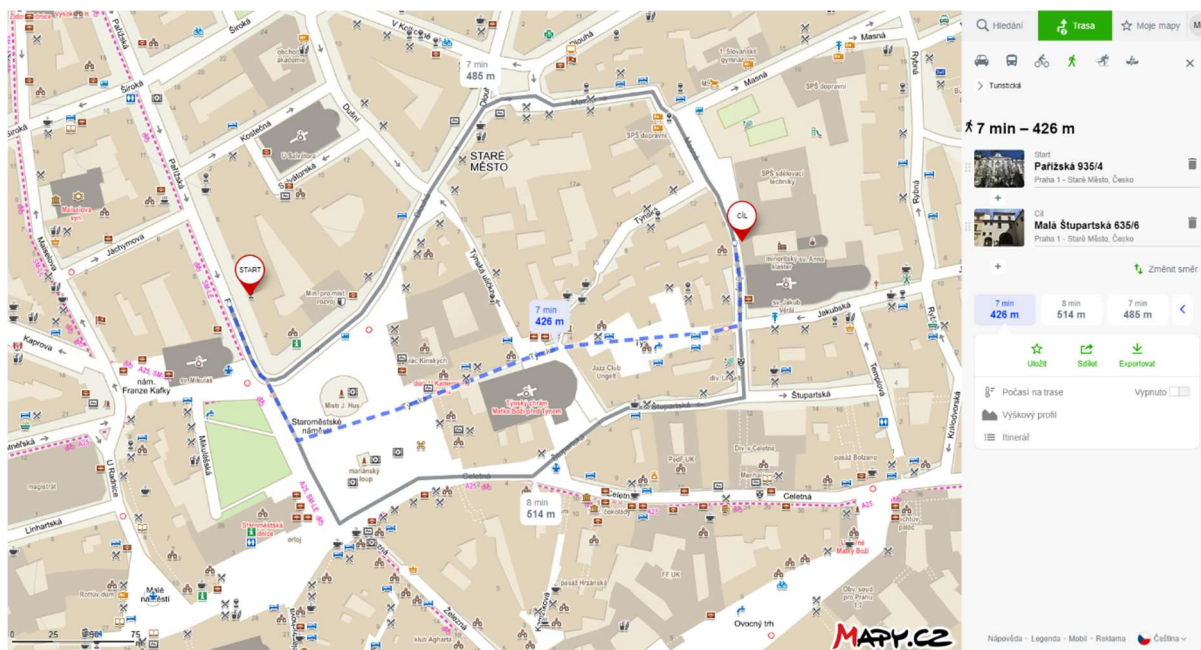
Accommodation

The delegates are responsible for booking accommodation on their own.

The Ministry of Regional Development has pre-booked some hotels for self-paying guests. The capacity of hotels is limited, and these hotels are listed on the following link: [Ministerstvo pro místní rozvoj ČR - Accommodation \(mmr.cz\)](#)

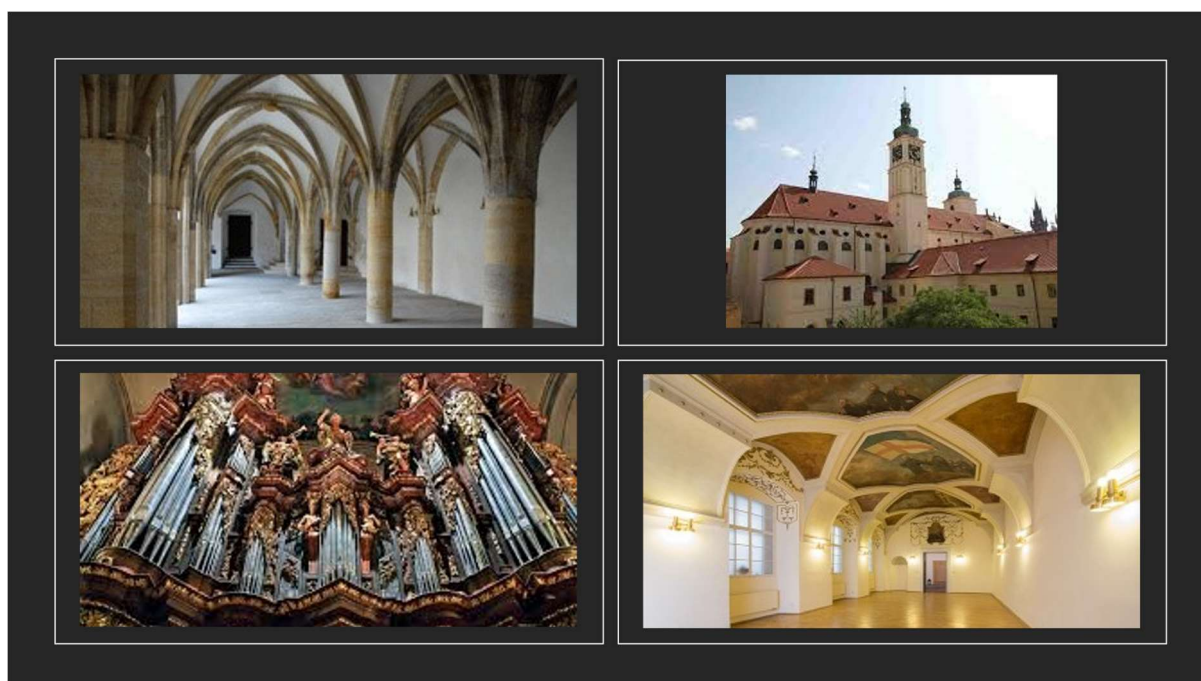
Evening Programme

An organ concert and joint dinner will be organized by the Czech Presidency. We will meet directly after the meeting at 18:00 in St. James's Basilica (Klášter minoritů sv. Jakuba, Malá Štupartská 6, Prague 1).



The concert will be short, about 15-20 minutes. Dinner will take place in the adjacent Jan Lucemburský Hall.

It can be cold in the church in December, warm clothing is recommended.



Warning - to enter the premises of the monastery it is necessary to present a badge from the MC meeting!

Wi-Fi

A free Wi-Fi access will be available for all participants in the venue.

Practical information

Smoking is prohibited in all public indoor areas.

Emergency number: 112

Country code: Czech Republic (CZ) +420

Currency: Czech crown, for actual exchange rates please see the Czech National Bank [website](#) (approx. 25 CZK/EUR)

Electricity: The voltage in the Czech Republic is 230V, 50 Hz

Tap water: Czech tap water is regularly tested for quality and is safe to drink.

COVID – 19 measures

Effective April 9, 2022, the Czech Republic has suspended all COVID-19 related entry restrictions for travellers. Travellers to the Czech Republic are no longer required to complete a Passenger Locator Form, provide proof of COVID-19 vaccination or prior infection, etc.

All participants should observe basic hygiene measures during the Informal meeting (hand hygiene, respiratory hygiene). In accordance with current Czech anti-epidemiological regulations, respirators are voluntary in all areas.

In case of worsening of the epidemiological situation, changes in preventive measures will be notified in advance. Current information on measures within the Czech Republic can be found on the COVID Portal [website](#).

Additional information



We are looking forward to meeting you in Prague.

CZ PRES Team of the Ministry of Regional Development

Contacts

For any questions regarding organizational matters, please consult:

Milada Hroňková

Milada.Hronkova@mmr.cz, mob: +420 731 628 120

Pavel Lukeš

Pavel.Lukes@mmr.cz, mob: +420 731 628 149